

F | B<sup>b</sup> | F | C | F |  
 B<sup>b</sup> | B<sup>b</sup> | C | B<sup>b</sup> | A | D-  
 | G | C | F | B<sup>b</sup> | B | C |

A A B A C B  
 A A C D

W

B

#

A

#

115

#

#

Intro to something

D

B-/F<sup>♯</sup>

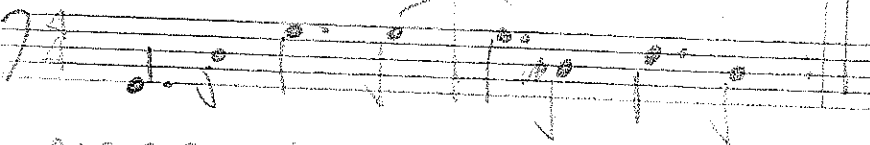
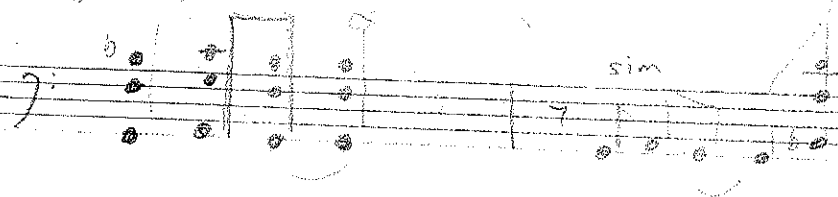
A

G/B

E-D

E<sup>♭</sup>-11

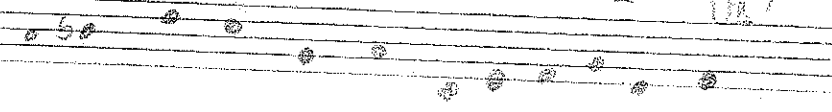
S 1 around keep



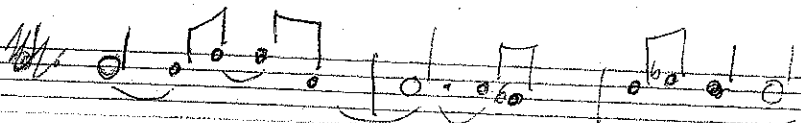
D47 G-7 A<sup>♯</sup> G/B G-7 E<sup>♯</sup>D7



D47 G-7 A<sup>♯</sup> G/B E-7<sup>♯</sup> C<sup>♯</sup>D<sup>♯</sup>



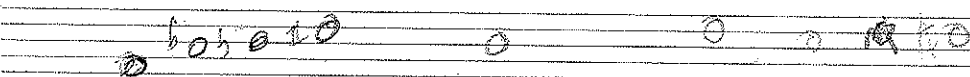
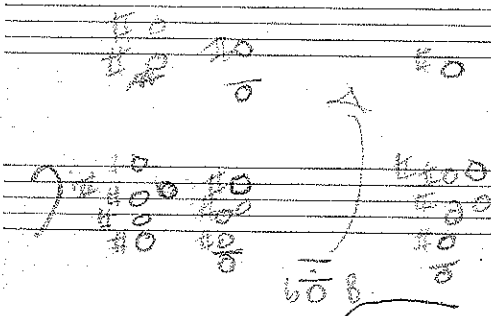
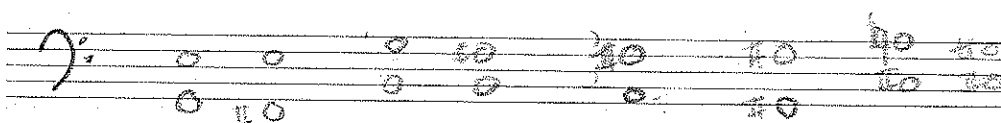
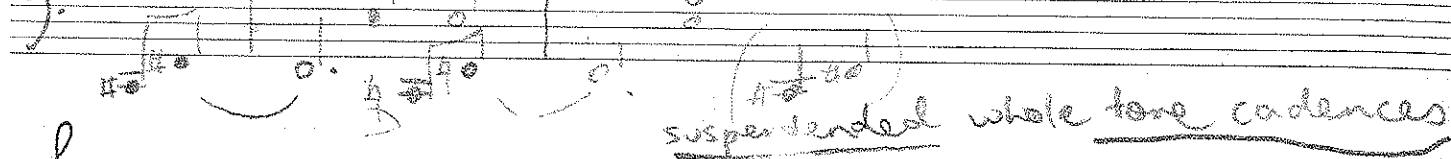
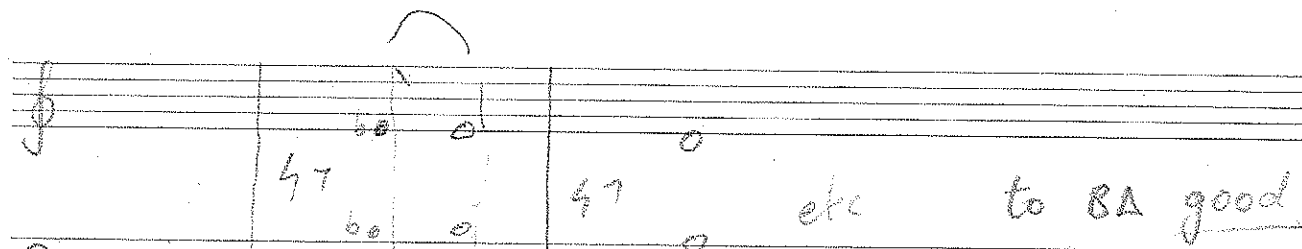
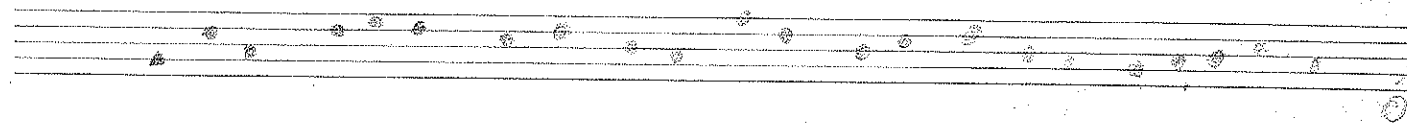
In love with life



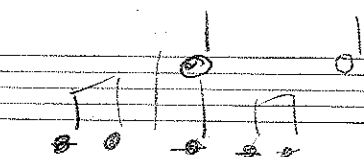
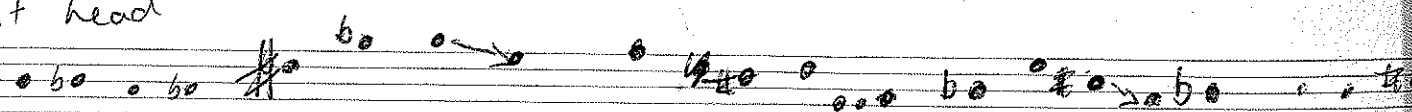
D-9/A C-9/G F-9/C F/B<sup>♯</sup> F<sup>♯</sup>D<sup>♯</sup> C/D B7/C

D<sup>♯</sup>47 last time

11



B bit head



Straight  $\frac{1}{8}$ 's

JOURNALS of the flightless

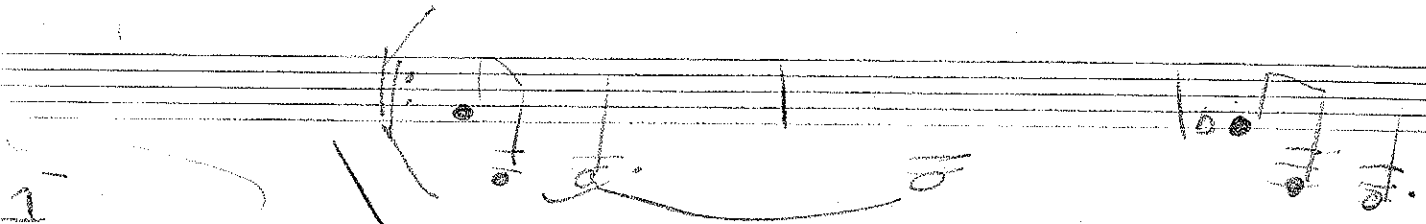
G/D Dsus C7#9 D7#9

BIRD

etc

G/D G7/D<sup>b</sup> C7 BΔ7

C7<sup>#</sup> (c4) no 3rd F7<sup>#</sup> (f4) no 3rd D7<sup>#9</sup> E7<sup>#</sup> F<sup>#7</sup>



G7 F phrasing BΔ7

G-7 F A-7 F

F-7 F BΔ7 #10



f#

confusion middle 8

G-7

G-7/F

B<sup>b</sup>Δ

~~A7~~ C7/A

A 7th of major 2nd of minor 5th of minor flat 6th

CA7/E<sup>b</sup>

F/B<sup>b</sup>

G/C

D-C/D

F/B<sup>b</sup>

G/C

F

E<sup>b</sup>/F

F/B<sup>b</sup>

G/C

bass pad

Brus

F9

wet blues  
F

Handwritten musical notation on three staves. The first staff contains a melodic line with notes and rests. The second staff contains a bass line with notes and rests. The third staff contains a series of chords written in a shorthand notation:  $B^7$ ,  $B^o$ ,  $F/c$ ,  $F/B^b$ ,  $E/A$ ,  $F/D$ ,  $G-7$ ,  $C-7$ ,  $F7$ ,  $A^b7$ ,  $G7$ ,  $F7$ . The word "steely chords" is written below the third staff.

Handwritten musical notation on three staves. The first staff contains a melodic line with notes and rests. The second staff contains a bass line with notes and rests. The third staff contains a series of chords written in a shorthand notation:  $B^7$ ,  $B^o$ ,  $F/c$ ,  $F/B^b$ ,  $E/A$ ,  $F/D$ ,  $G-7$ ,  $C-7$ ,  $F7$ ,  $A^b7$ ,  $G7$ ,  $F7$ . The word "pathetique chords" is written below the third staff.

Handwritten musical notation on three staves. The first staff contains a melodic line with notes and rests. The second staff contains a bass line with notes and rests. The third staff contains a series of chords written in a shorthand notation:  $B^7$ ,  $B^o$ ,  $F/c$ ,  $F/B^b$ ,  $E/A$ ,  $F/D$ ,  $G-7$ ,  $C-7$ ,  $F7$ ,  $A^b7$ ,  $G7$ ,  $F7$ . The word "sing" is written above the third staff.

Handwritten musical notation on three staves. The first staff contains a melodic line with notes and rests. The second staff contains a bass line with notes and rests. The third staff contains a series of chords written in a shorthand notation:  $B^7$ ,  $B^o$ ,  $F/c$ ,  $F/B^b$ ,  $E/A$ ,  $F/D$ ,  $G-7$ ,  $C-7$ ,  $F7$ ,  $A^b7$ ,  $G7$ ,  $F7$ .

Handwritten musical notation on three staves. The first staff contains a melodic line with notes and rests. The second staff contains a bass line with notes and rests. The third staff contains a series of chords written in a shorthand notation:  $B^7$ ,  $B^o$ ,  $F/c$ ,  $F/B^b$ ,  $E/A$ ,  $F/D$ ,  $G-7$ ,  $C-7$ ,  $F7$ ,  $A^b7$ ,  $G7$ ,  $F7$ . The word "6th" is written above the third staff.

3/4

# DAY BY DAY

7

DA7 C#- C# / F# A/B

sometimes

verse

F#

A<sup>s</sup> - E/A

DA7 A B-7 C#-7 DA7 B/E B-

bass line

A<sup>b</sup>st E/A

2nd C#

DA7 C#- C# / F# A/B

DA7 AD A/D B/E C# / B E/C# DA

GA7 F# DA AD C# / F# A/B

day by day

D C<sup>#</sup>-11 C<sup>#</sup>/F<sup>#</sup> A/B

Some days I'm not the same

D E/A E/A D/B

Some people search vain

that's why

D C<sup>#</sup>-11 C<sup>#</sup>/F<sup>#</sup> A/B

Some days I'm not the same

D E/A A D C<sup>#</sup> B

Some people search vain

D E/A D/B C<sup>#</sup>

that's why I live each day day by day

$\frac{40}{20}$   $\frac{40}{20}$   $\frac{40}{20}$   $\frac{40}{20}$   $\frac{40}{20}$   $\frac{40}{20}$   
 $\frac{40}{20}$   $\frac{40}{20}$   $\frac{40}{20}$   $\frac{40}{20}$   $\frac{40}{20}$   $\frac{40}{20}$   
 $\frac{40}{20}$   $\frac{40}{20}$   $\frac{40}{20}$   $\frac{40}{20}$   $\frac{40}{20}$   $\frac{40}{20}$

$\frac{40}{20}$   
 $\frac{40}{20}$   
 $\frac{40}{20}$



$B = B_{\text{ges}}$

$$S_A = S_{A0} e^{-\lambda_A t}$$

last match arrangement

\_\_\_\_\_

1. The first part of the document is a header section containing the following information:
 

- Page 1 of 1
- Document ID: 123456789
- Version: 1.0
- Date: 2023-10-27
- Author: John Doe
- Reviewer: Jane Smith
- Editor: Bob Johnson
- Manager: Alice Brown
- Director: Charlie White
- Executive: David Black
- President: Emily Green
- Chairman: Frank Blue
- Board of Directors: George Grey
- Shareholders: Helen Yellow
- Employees: Ian Purple
- Customers: Julia Pink
- Suppliers: Kevin Orange
- Partners: Lisa Red
- Competitors: Mark Green
- Regulators: Nancy Blue
- Analysts: Paul Grey
- Investors: Rachel Yellow
- Media: Steve Purple
- Public: Tracy Pink
- Government: Victor Orange
- Environment: Wendy Red
- Society: Xavier Green
- Community: Yvonne Blue
- Industry: Zach Grey
- Academy: Adam Yellow
- Arts: Bella Purple
- Science: Carter Pink
- Technology: David Orange
- Healthcare: Emily Red
- Education: Frank Green
- Religion: Grace Blue
- Politics: Henry Grey
- Law: Irene Yellow
- Business: Jack Purple
- Finance: Karen Pink
- Real Estate: Larry Orange
- Transportation: Mary Red
- Energy: Norman Green
- Environment: Olivia Blue
- Food: Peter Grey
- Drink: Quinn Yellow
- Shopping: Robert Purple
- Travel: Sarah Pink
- Leisure: Thomas Orange
- Work: Victoria Red
- Home: William Green
- Office: Xavier Blue
- Industry: Yvonne Grey
- Academy: Zach Yellow
- Arts: Adam Purple
- Science: Bella Pink
- Technology: Carter Orange
- Healthcare: David Red
- Education: Emily Green
- Religion: Frank Blue
- Politics: Grace Grey
- Law: Henry Yellow
- Business: Irene Purple
- Finance: Jack Pink
- Real Estate: Karen Orange
- Transportation: Larry Red
- Energy: Mary Green
- Environment: Norman Blue
- Food: Olivia Grey
- Drink: Peter Yellow
- Shopping: Quinn Purple
- Travel: Robert Pink
- Leisure: Sarah Orange
- Work: Thomas Red
- Home: Victoria Green
- Office: William Blue
- Industry: Xavier Grey
- Academy: Yvonne Yellow
- Arts: Zach Purple
- Science: Adam Pink
- Technology: Bella Orange
- Healthcare: Carter Red
- Education: David Green
- Religion: Emily Blue
- Politics: Frank Grey
- Law: Grace Yellow
- Business: Henry Purple
- Finance: Irene Pink
- Real Estate: Jack Orange
- Transportation: Karen Red
- Energy: Larry Green
- Environment: Mary Blue
- Food: Norman Grey
- Drink: Olivia Yellow
- Shopping: Peter Purple
- Travel: Quinn Pink
- Leisure: Robert Orange
- Work: Sarah Red
- Home: Thomas Green
- Office: Victoria Blue
- Industry: William Grey
- Academy: Xavier Yellow
- Arts: Yvonne Purple
- Science: Zach Pink
- Technology: Adam Orange
- Healthcare: Bella Red
- Education: Carter Green
- Religion: David Blue
- Politics: Emily Grey
- Law: Frank Yellow
- Business: Grace Purple
- Finance: Henry Pink
- Real Estate: Irene Orange
- Transportation: Jack Red
- Energy: Karen Green
- Environment: Larry Blue
- Food: Mary Grey
- Drink: Norman Yellow
- Shopping: Olivia Purple
- Travel: Peter Pink
- Leisure: Quinn Orange
- Work: Robert Red
- Home: Sarah Green
- Office: Thomas Blue
- Industry: Victoria Grey
- Academy: William Yellow
- Arts: Xavier Purple
- Science: Yvonne Pink
- Technology: Zach Orange
- Healthcare: Adam Red
- Education: Bella Green
- Religion: Carter Blue
- Politics: David Grey
- Law: Emily Yellow
- Business: Frank Purple
- Finance: Grace Pink
- Real Estate: Henry Orange
- Transportation: Irene Red
- Energy: Jack Green
- Environment: Karen Blue
- Food: Larry Grey
- Drink: Mary Yellow
- Shopping: Norman Purple
- Travel: Olivia Pink
- Leisure: Peter Orange
- Work: Quinn Red
- Home: Robert Green
- Office: Sarah Blue
- Industry: Thomas Grey
- Academy: Victoria Yellow
- Arts: William Purple
- Science: Xavier Pink
- Technology: Yvonne Orange
- Healthcare: Zach Red
- Education: Adam Green
- Religion: Bella Blue
- Politics: Carter Grey
- Law: David Yellow
- Business: Emily Purple
- Finance: Frank Pink
- Real Estate: Grace Orange
- Transportation: Henry Red
- Energy: Irene Green
- Environment: Jack Blue
- Food: Karen Grey
- Drink: Larry Yellow
- Shopping: Mary Purple
- Travel: Norman Pink
- Leisure: Olivia Orange
- Work: Peter Red
- Home: Quinn Green
- Office: Robert Blue
- Industry: Sarah Grey
- Academy: Thomas Yellow
- Arts: Victoria Purple
- Science: William Pink
- Technology: Xavier Orange
- Healthcare: Yvonne Red
- Education: Zach Green
- Religion: Adam Blue
- Politics: Bella Grey
- Law: Carter Yellow
- Business: David Purple
- Finance: Emily Pink
- Real Estate: Frank Orange
- Transportation: Grace Red
- Energy: Henry Green
- Environment: Irene Blue
- Food: Jack Grey
- Drink: Karen Yellow
- Shopping: Larry Purple
- Travel: Mary Pink
- Leisure: Norman Orange
- Work: Olivia Red
- Home: Peter Green
- Office: Quinn Blue
- Industry: Robert Grey
- Academy: Sarah Yellow
- Arts: Thomas Purple
- Science: Victoria Pink
- Technology: William Orange
- Healthcare: Xavier Red
- Education: Yvonne Green
- Religion: Zach Blue
- Politics: Adam Grey
- Law: Bella Yellow
- Business: Carter Purple
- Finance: David Pink
- Real Estate: Emily Orange
- Transportation: Frank Red
- Energy: Grace Green
- Environment: Henry Blue
- Food: Irene Grey
- Drink: Jack Yellow
- Shopping: Karen Purple
- Travel: Larry Pink
- Leisure: Mary Orange
- Work: Norman Red
- Home: Olivia Green
- Office: Peter Blue
- Industry: Quinn Grey
- Academy: Robert Yellow
- Arts: Sarah Purple
- Science: Thomas Pink
- Technology: Victoria Orange
- Healthcare: William Red
- Education: Xavier Green
- Religion: Yvonne Blue
- Politics: Zach Grey
- Law: Adam Yellow
- Business: Bella Purple
- Finance: Carter Pink
- Real Estate: David Orange
- Transportation: Emily Red
- Energy: Frank Green
- Environment: Grace Blue
- Food: Henry Grey
- Drink: Irene Yellow
- Shopping: Jack Purple
- Travel: Karen Pink
- Leisure: Larry Orange
- Work: Mary Red
- Home: Norman Green
- Office: Olivia Blue
- Industry: Peter Grey
- Academy: Quinn Yellow
- Arts: Robert Purple
- Science: Sarah Pink
- Technology: Thomas Orange
- Healthcare: Victoria Red
- Education: William Green
- Religion: Xavier Blue
- Politics: Yvonne Grey
- Law: Zach Yellow
- Business: Adam Purple
- Finance: Bella Pink
- Real Estate: Carter Orange
- Transportation: David Red
- Energy: Emily Green
- Environment: Frank Blue
- Food: Grace Grey
- Drink: Henry Yellow
- Shopping: Irene Purple
- Travel: Jack Pink
- Leisure: Karen Orange
- Work: Larry Red
- Home: Mary Green
- Office: Norman Blue
- Industry: Olivia Grey
- Academy: Peter Yellow
- Arts: Quinn Purple
- Science: Robert Pink
- Technology: Sarah Orange
- Healthcare: Thomas Red
- Education: Victoria Green
- Religion: William Blue
- Politics: Xavier Grey
- Law: Yvonne Yellow
- Business: Zach Purple
- Finance: Adam Pink
- Real Estate: Bella Orange
- Transportation: Carter Red
- Energy: David Green
- Environment: Emily Blue
- Food: Frank Grey
- Drink: Grace Yellow
- Shopping: Henry Purple
- Travel: Irene Pink
- Leisure: Jack Orange
- Work: Karen Red
- Home: Larry Green
- Office: Mary Blue
- Industry: Norman Grey
- Academy: Olivia Yellow
- Arts: Peter Purple
- Science: Quinn Pink
- Technology: Robert Orange
- Healthcare: Sarah Red
- Education: Thomas Green
- Religion: Victoria Blue
- Politics: William Grey
- Law: Xavier Yellow
- Business: Yvonne Purple
- Finance: Zach Pink
- Real Estate: Adam Orange
- Transportation: Bella Red
- Energy: Carter Green
- Environment: David Blue
- Food: Emily Grey
- Drink: Frank Yellow
- Shopping: Grace Purple
- Travel: Henry Pink
- Leisure: Jack Orange
- Work: Karen Red
- Home: Larry Green
- Office: Mary Blue
- Industry: Norman Grey
- Academy: Olivia Yellow
- Arts: Peter Purple
- Science: Quinn Pink
- Technology: Robert Orange
- Healthcare: Sarah Red
- Education: Thomas Green
- Religion: Victoria Blue
- Politics: William Grey
- Law: Xavier Yellow
- Business: Yvonne Purple
- Finance: Zach Pink
- Real Estate: Adam Orange
- Transportation: Bella Red
- Energy: Carter Green
- Environment: David Blue
- Food: Emily Grey
- Drink: Frank Yellow
- Shopping: Grace Purple
- Travel: Henry Pink
- Leisure: Jack Orange
- Work: Karen Red
- Home: Larry Green
- Office: Mary Blue
- Industry: Norman Grey
- Academy: Olivia Yellow
- Arts: Peter Purple
- Science: Quinn Pink
- Technology: Robert Orange
- Healthcare: Sarah Red
- Education: Thomas Green
- Religion: Victoria Blue
- Politics: William Grey
- Law: Xavier Yellow
- Business: Yvonne Purple
- Finance: Zach Pink
- Real Estate: Adam Orange
- Transportation: Bella Red
- Energy: Carter Green
- Environment: David Blue
- Food: Emily Grey
- Drink: Frank Yellow
- Shopping: Grace Purple
- Travel: Henry Pink
- Leisure: Jack Orange
- Work: Karen Red
- Home: Larry Green
- Office: Mary Blue
- Industry: Norman Grey
- Academy: Olivia Yellow
- Arts: Peter Purple
- Science: Quinn Pink
- Technology: Robert Orange
- Healthcare: Sarah Red
- Education: Thomas Green
- Religion: Victoria Blue
- Politics: William Grey
- Law: Xavier Yellow
- Business: Yvonne Purple
- Finance: Zach Pink
- Real Estate: Adam Orange
- Transportation: Bella Red
- Energy: Carter Green
- Environment: David Blue
- Food: Emily Grey
- Drink: Frank Yellow
- Shopping: Grace Purple
- Travel: Henry Pink
- Leisure: Jack Orange
- Work: Karen Red
- Home: Larry Green
- Office: Mary Blue
- Industry: Norman Grey

Ε Δ

B.

in all keys

CA7 BA7+

ΕΔ

watching the water  
watching my face as it turns to grey  
I know what that feels like

I know what that feels like

D C C/B E

PS

AND

B / C

G/A P/B

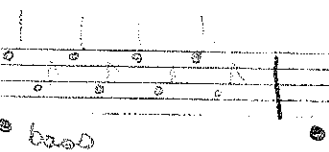
AS

The image shows two staves of handwritten musical notation. The top staff begins with a treble clef and contains several measures of music, including eighth notes and quarter notes. A large 'F' is written above the staff towards the right side. The bottom staff starts with a bass clef and also contains musical notation, including some beamed eighth notes. There are additional markings like 'Bb' and '(6)' near the end of the piece. The handwriting is somewhat informal and sketchy.

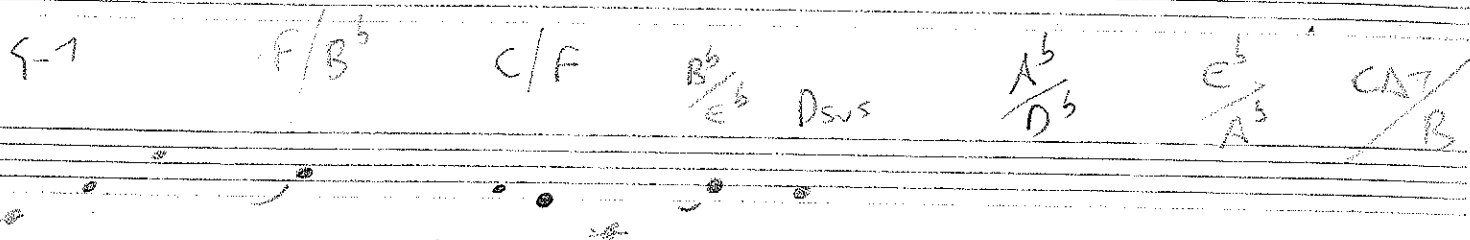
34

5

groove

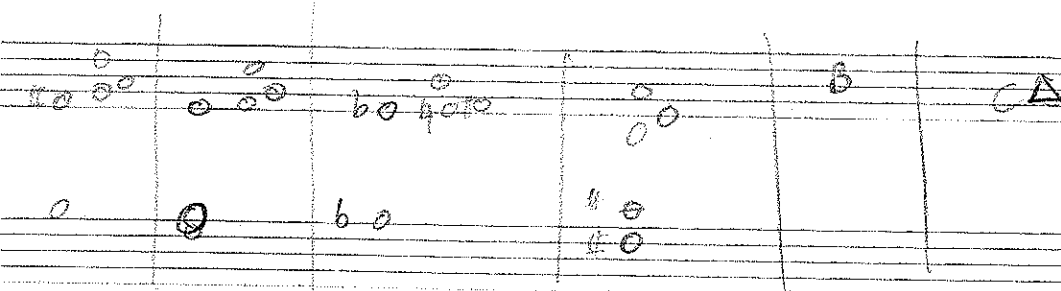
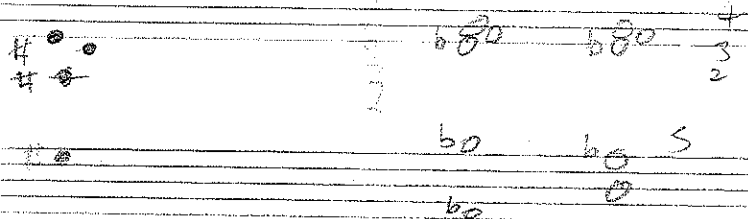


E D C<sup>#</sup> B E C  
 A G F<sup>#</sup> E A B  
 D C B A E C  
 B A A<sup>b</sup> F<sup>#</sup> B C

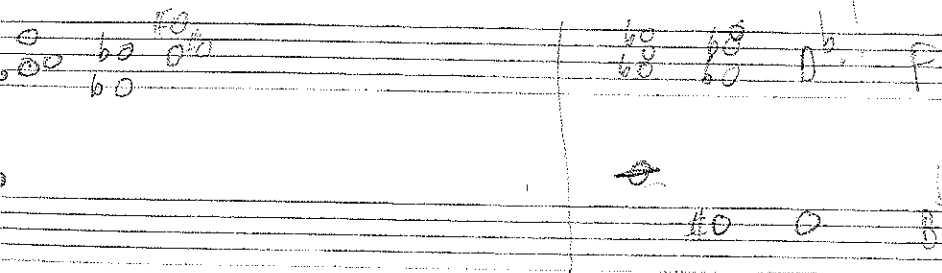
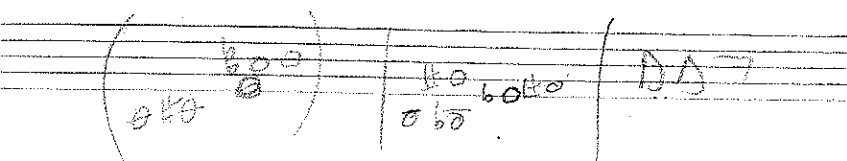


CA7 Stylish A7 voicing

a nice colour



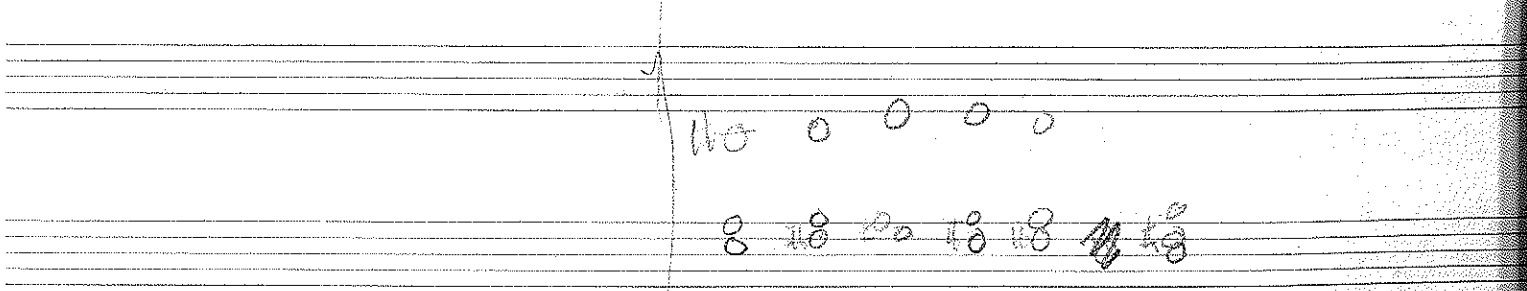
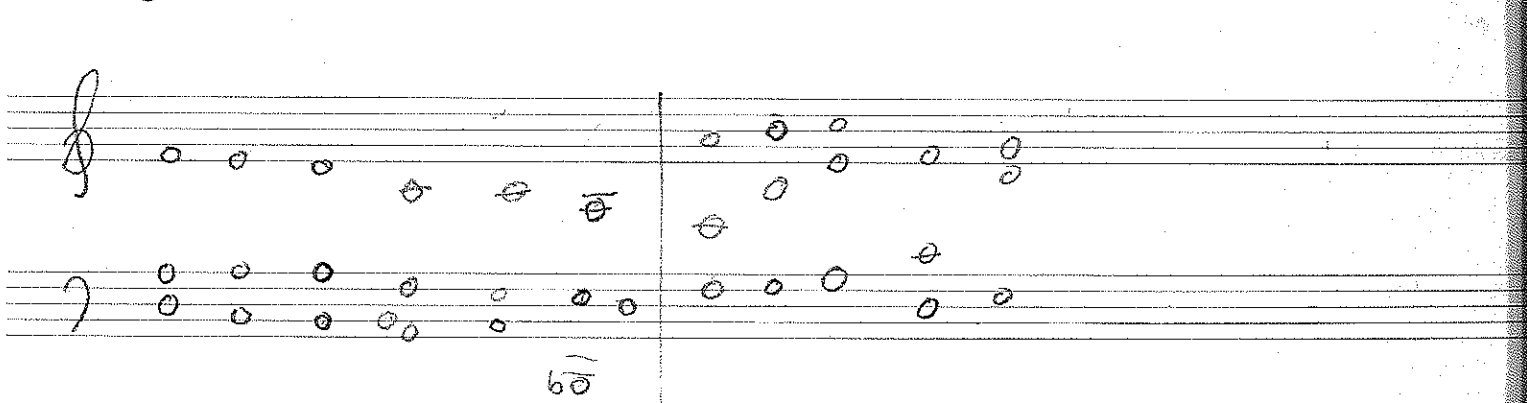
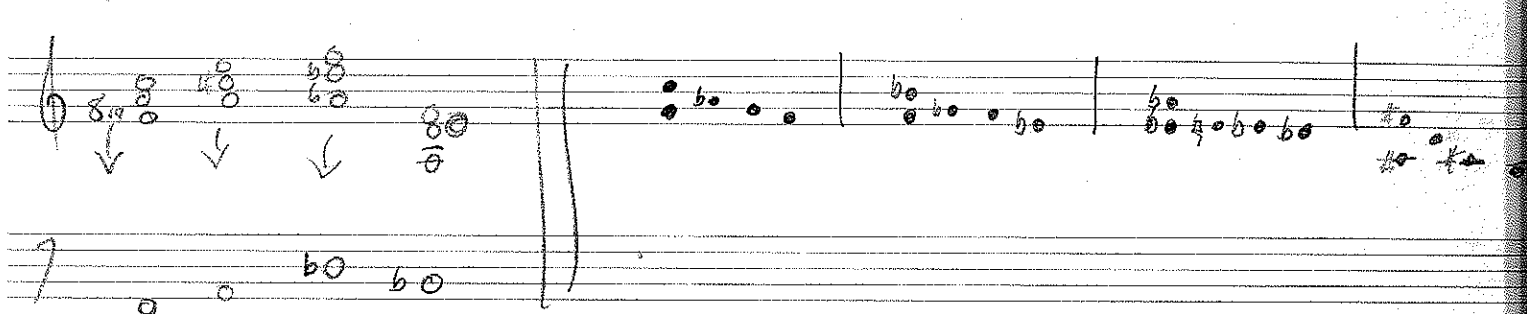
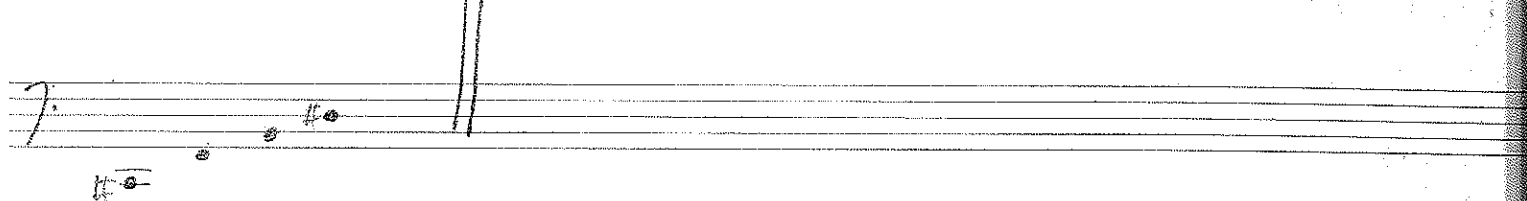
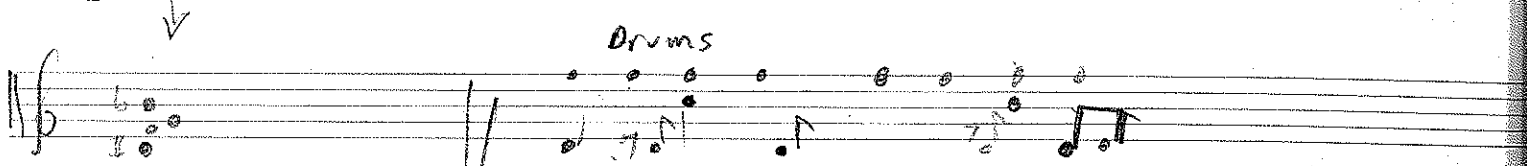
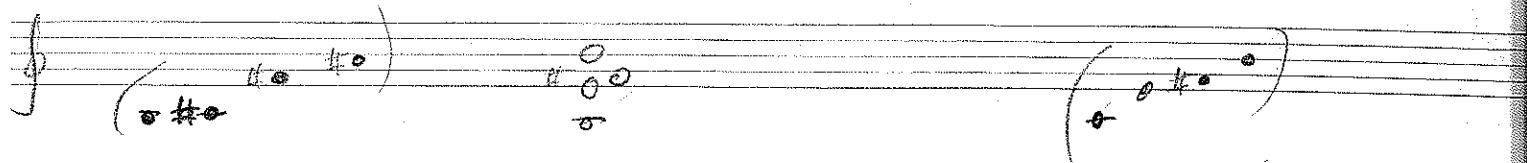
A G B CA A B CD  
 B A C E



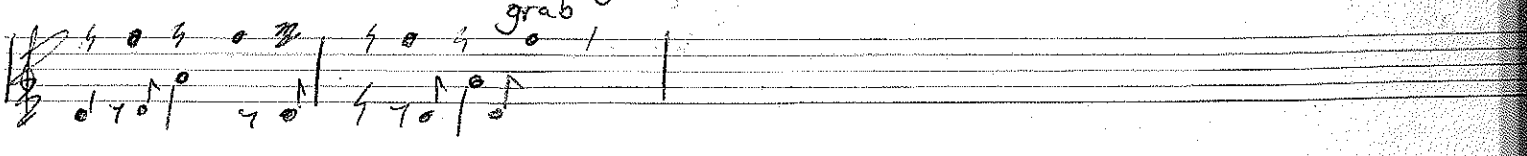
chord A<sup>b</sup>-

E A or -

D7 or Δ



here & now groove



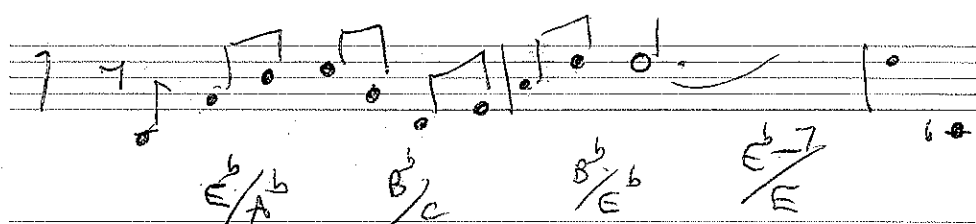
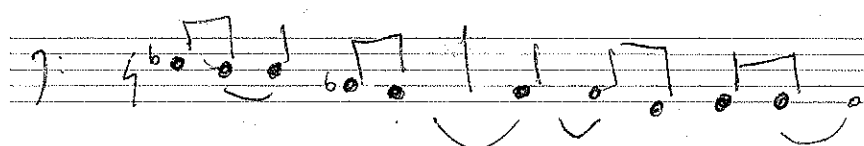
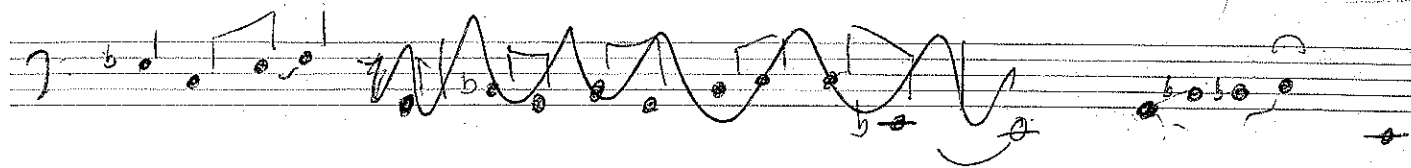
B. D. M. E

E<sup>b</sup> 6

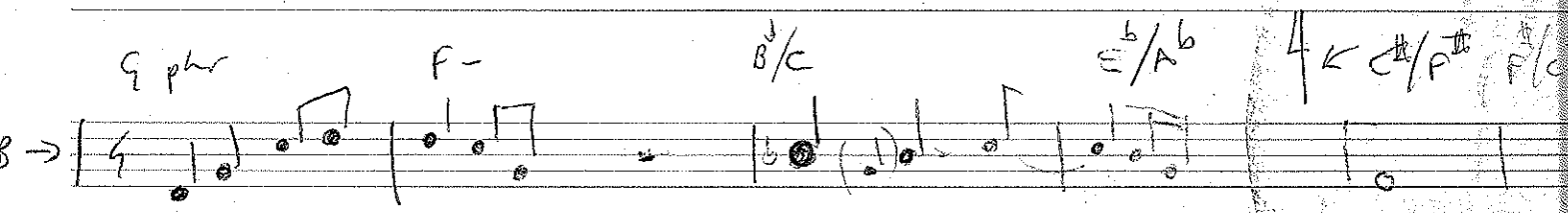
Handwritten musical notation on three staves. The first staff contains the notes G, B, and E. The second staff contains the notes B, D, and F. The third staff contains the notes G, B, and E. Above the staves are various chord symbols: B7, B7+, EΔ7, B-7/F#, B+, C#, C-, F#/B, F#/E, C/F, and A/B.

Handwritten musical notation on three staves. The first staff contains the notes G, B, and E. The second staff contains the notes B, D, and F. The third staff contains the notes G, B, and E. Above the staves are various chord symbols: E/C, G-/E<sup>b</sup>, E<sup>b</sup>/C, P/B<sup>b</sup>, GSVS, A<sup>b</sup>Δ, E<sup>b</sup>/A<sup>b</sup>, B<sup>b</sup>/C, and E<sup>b</sup>/A<sup>b</sup>.

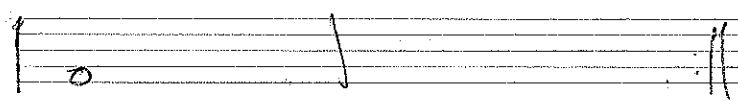
# Haanwana (climb inside)



9 phr EA F phr DA (B sths) D sths  
 F dx  
 9 phr F- B^b/c E^b/A^b C^#/F^# A^b B/E E-A



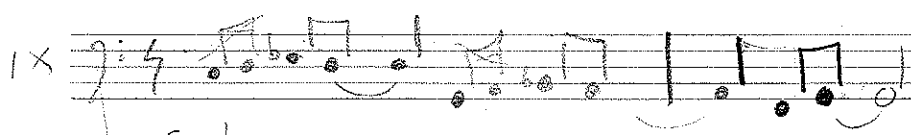
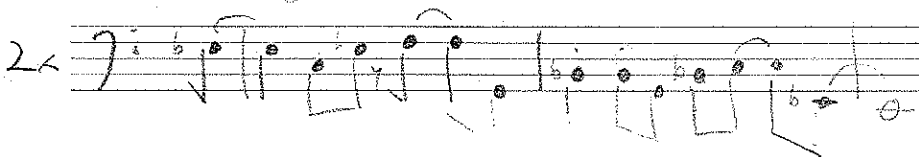
← E^bA



swinging like shit

A=

2nd time 1-



9 phr. 5-5 F phr. EA 9 phr EA F phr. DA  
 3 3

Wednesday